

WORLD COLUMBIAN



STAMP EXPO '92  
MAY 22-31, 1992 - CHICAGO

# Linn's Stamp News



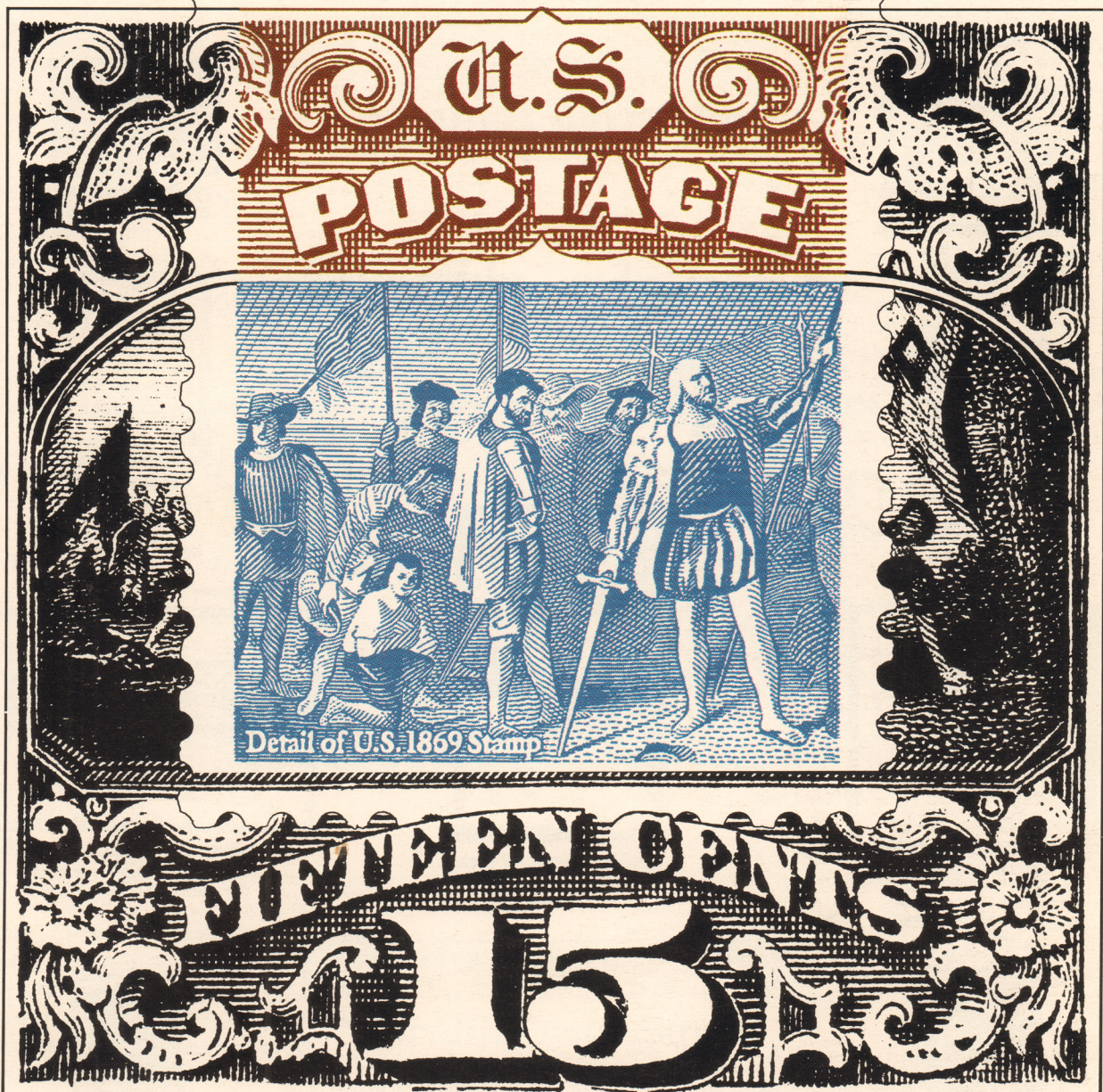
WORLD COLUMBIAN



STAMP EXPO '92  
MAY 22-31, 1992 - CHICAGO

WORLD  
COLUMBIAN  
STAMP EXPO '92  
Chicago, May 22-31, 1992

29  
USA



Detail of U.S. 1869 Stamp

## Official Program and Guide

# Philatelic organizations and events

(Booth numbers are in parenthesis. Please consult floor plan on pages 46-47. Information contained in this listing was verified as accurate at press time.)

**American Association of Philatelic Exhibitors (S4)**

Stephen D. Schumann  
2417 Cabrillo Drive  
Hayward, CA 94545

**American First Day Cover Society (S12)**

Thomas Foust  
5578 State Route 186  
McComb, OH 45858

**American Philatelic Congress Inc. (S4)**

Peter P. McCann  
Box 68470  
Indianapolis, IN 46268

**American Philatelic Society (S1-2)**

Box 8000  
State College, PA 16803

**American Society for Philatelic Pages and Panels (S15)**

Jim Canon  
Box 88444  
Carol Stream, IL 60188

**American Stamp Dealers Association (S17)**

3 School St.  
Glen Cove, NY 11542

**American Topical Association (S6-7)**

Donald W. Smith  
Box 630  
Johnstown, PA 15907

**Bureau Issues Association (S16)**

Jay Stotts  
Box 321  
Mentor, OH 44061

**Cardinal Spellman Philatelic Museum (S34)**

235 Wellesley St.  
Weston, MA 02193

**Chicago Philatelic Society (S3)**

Jacquelyn Alton  
Box 81163  
Chicago, IL 60681

**Chicagopex 92 (S3)**

Jacquelyn Alton  
Box 81163  
Chicago, IL 60681

**The China Stamp Society (S11)**

J. Lewis Blackburn  
21816 8th Place West  
Bothell, WA 98021

**Christopher Columbus Philatelic Society (S8)**

Ronald J. Maineri  
4795 Mariposa Drive  
San Bernardino, CA 92404

**Collectors Club of New York (SB13-L)**

22 E. 35th St.  
New York, NY 10016

**Compex (S18)**

Box 123  
Chicago, IL 60690

**Eire Philatelic Association (S26)**

Margaret H. Zellers

Box 52207  
Riverside, CA 92517-3207

**Father Flanagan's Boy's Home (S23)**

Ivan E. Sawyer  
Leon Myers Stamp Center  
Box 1  
Boys Town, NE 68010

**Genova 92 (245)**

Italian Ministry of Posts  
Viale America 201  
I-00144 Roma  
Italy

**International Society for Japanese Philately (S11)**

James Jacobson  
815 Springsguth Road  
Schaumburg, IL 60193

**International Society of Guatemala Collectors (S24)**

Wesley S. Waite  
2818 W. Telegraph Ave.  
Stockton, CA 95204

**Junior Philatelists of America (S14)**

Sally Horn  
Box 577  
Boalsburg, PA 16827

**Military Postal History Society (S21)**

Alan Warren  
Box 17124  
Philadelphia, PA 19105

**National Postal Museum (SB26)**

Smithsonian Institution  
1300 Eye St. NW, Suite 430E  
Washington, DC 20005

**Pacific 97 (S5)**

Stephen D. Schumann  
2417 Cabrillo Drive  
Hayward, CA 94545

**Philatelic Foundation (SB13-L)**

21 E. 40th St.  
New York, NY 10016

**Philitex 92 (SB13-L)**

The Philatelic Foundation  
21 E. 40th St.  
New York, NY 10016

**Pitcairn Island Study Group (S10)**

Anne Hughes  
1825 Spring St.  
Quincy, IL 62301

**Postal History Foundation (S27)**

Box 40725  
920 N. First  
Tucson, AZ 85719

**Precancel Stamp Society (S20)**

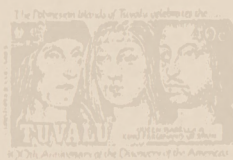
Phil Cayford  
Box 497  
Dublin, NH 03444

**Scandinavian Collectors Club (S19)**

Fred H. Bloodow  
810 Dobson St. — 1A  
Evanston, IL 60202

## TUVALU PHILATELIC BUREAU

Tuvalu together with many other Postal Administrations participating in WCSEXPO 22nd - 31st May 1992 would be releasing a set of 4 stamps honouring the 500th Anniversary of the Discovery of America by Christopher Columbus.



BOOTH NO. 421

**Release Date:** 22nd May 1992

**Face Value:** AUD \$3.00

**AVAILABLE IN:** MINT/CTO; FDCs; P/PACKS etc.

A special cachet would be made available for postmarking philatelic passports etc. . . . the validity of this cachet is only for the duration of the EXPO, 22nd - 31st May 1992.

**NEW STANDING ORDER FACILITIES** can be provided by our staff during the SHOW plus many, many other philatelic items that we can offer from our **BOOTH NO. 421**.

**ACCEPTED METHOD OF PAYMENT:** Personal Cheques, I.M.O., Certified Bank Cheques, Bank Notes (U.S. & POUND STERLING) plus any other International currency that is convertible and accepted by the EXPO.

**"ALSO AVAILABLE FROM TUVALU - AND OF COURSE WILL BE ACCEPTED AT WCSEXPO ARE THE FOLLOWING C/CARDS"**  
AMEX      MASTERCARD      ACCESS      EUROCARD

*"LOOKING FORWARD TO SEEING YOU ALL AT WCSEXPO '92, 22nd - 31st MAY 1992."*

**TUVALU PHILATELIC BUREAU**

GPO BOX 24, FUNAFUTI, TUVALU, CENTRAL PACIFIC

**Scouts on Stamps Society International (S22)**

William J. Yankus  
Box 148  
Slinger, WI 53086

**Society of Australasian Specialists/Oceania (S25)**

Janet Klug  
6854 Newtonsville Road  
Pleasant Plain, OH 45162

**Society of Costa Rica Collectors (S24)**

T.C. Willoughby  
7600 Ridgemoor Dr.  
Newburgh, IN 47630-2822

**Souvenir Card Collectors Society (S28)**

Curtis D. Radford  
400 Ceape Ave.  
Oshkosh, WI 54901

**Spanish Philatelic Society (S31)**

A.J. Orville  
29 Shadow Lane  
Great Neck, NY 11021-2510

**St. Helena, Ascension & Tristan da Cunha Philatelic Society (S10)**

Jeffrey P. Vadheim  
2137 E. Nicolet Ave.  
Phoenix, AZ 85020

**Stamp Venturers (SB22 & 24)**

9934 Main St.  
Fairfax, VA 22031

**Tonga & Tin Can Mail Study Circle (S25)**

Janet Klug  
6854 Newtonsville Road  
Pleasant Plain, OH 45162

**Trans-Mississippi Philatelic Society (S8)**

Dorothy L. Green  
2200 36th St.  
Des Moines, IA 50310

**U.S. Cancellation Club (S31)**

Eugene E. Schrier  
Box 815  
Upper Montclair, NH 07043

**United Nations Philatelists (S29)**

Clay Wallace  
158 Arapaho Circle  
San Ramon, CA 94583

**U.N. Collectors of Chicagoland (S29)**

Benjamin H. Cohen  
Box 1674  
Chicago, IL 60690

**United Postal Stationery Society (S9)**

Joann Thomas  
Box 48  
Redlands, CA 92373

**WCSE 92 (SB19-20)**

7137 W. Higgins Road  
Chicago, IL 60656

**Wisconsin Federation of Stamp Clubs (S13)**

Karen Weigt  
4184 Rose Court  
Middleton, WI 53562

**SCHWANKE & SOHN  
Briefmarkenauktionen**

Why not sell your German stamps and covers on the German market?

We are one of the major German auction firms with the experience of more than 200 successfully held public auctions within the last 20 years.

Consignments will be accepted at WCSE '92!

Please contact us at our **BOOTH NO. 310** at the exhibition!

**SCHWANKE & SOHN  
Stamp Auctions**

K1: Reichenstr. 1 • D-2000 Hamburg

PH: (Germany) 011-49-40-337157

FAX: (Germany) 011-49-40-331330

Members of APHV, Köhn — PTS, London  
BDB, Wiesbaden

**SB6 - WORLD COLUMBIAN STAMP EXPO '92 - SB6**

**The Finest in United States Stamps  
Selling Stamps & Buying Collections**

We carry 19th & 20th Century Stamps, Coils,  
Cut Squares & Entires and Back-of-Book.

Expertizing & Appraisals  
by appointment only

EXTENSIVE  
SELECTION

**WORLD WIDE  
POSTAL HISTORY**

SHIP LETTER  
TROON

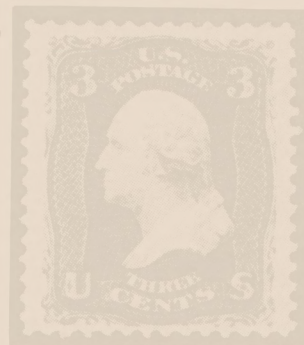
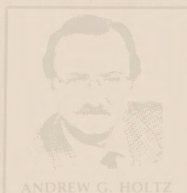
LOOKING FORWARD TO MEETING  
WITH OLD FRIENDS AND NEW CLIENTS

**BUYING**

ACHETONS - COMPRAMOS - VESZÜNK - KAUFEN - ACQUISTIAMO



P.O. BOX 1664  
GREENWICH, CT 06836 U.S.A.



**RICHARD A. CHAMPAGNE LTD.**  
P.O. BOX 372 • NEWTON, MA 02160  
617-989-5719  
Member:  
ASDA, APS, USPS,  
PRA and CCNY.

MEMBER  
AMERICAN STAMP DEALERS ASSOCIATION  
PHILATELIC TRADERS SOCIETY  
AMERICAN PHILATELIC SOCIETY LIFE MEMBER  
BRITISH NORTH AMERICAN PHILATELIC SOCIETY  
ROYAL PHILATELIC SOCIETY OF CANADA  
CANADIAN STAMP DEALERS ASSOCIATION  
CANADIAN PHILATELIC SOCIETY OF GREAT BRITAIN  
COLLECTORS CLUB OF NEW YORK

TELEPHONE: (203) 625-0020

FAX: 203-625-0050

HOLTZ - CHAMPAGNE - HOLTZ - CHAMPAGNE

HOLTZ - CHAMPAGNE - HOLTZ - CHAMPAGNE

(Continued from page S73)

San Marino.

Topical/Thematic Exhibits

5311-16 Beguiling Orbs of Beauty.

5317-25 The World of Owls.

5326-32 The Life of Mary.

5333-40 Westward Expansion of European Man in North America:  
Aided by the Horse.

# COMPLEX 92 EXHIBITS

## AUSTIN PHILATELIC CLUB

- 6001-08 The Peninsula and Oriental Mails.\* Howard Seizer.
- 6009-16 Mexico: Hidaigos of 1874-1883.\* Ralph Herdenberg.
- 6017-26 Tennessee Postal History.\* Marjorie H. Outlaw.
- 6027-28 Stamps on the Right Track. Keith Maatman.
- 6029-33 Turtles and Tortoises. Barbara Wirta.
- 6034-40 U.S. First Day Socked on the Nose. Wilbert Dalum.
- 6041 Revenuers on the Rails. Keith Maatman.
- 6042-43 We're Not All Dinosaurs. Barbara Wirta.

- 6044-53 Egyptian Expeditionary Force Occupied Enemy Territory Administration. Anonymous.
- 6054 From Apples to Appleseed. Keith Maatman.
- 6055-64 German Postal War. Robert Glass.
- 6065 Mail on the Rails. Keith Maatman.
- 6066-70 Maine Postal History. Donald C. Cramer.
- \* Non-competitive

## JACK KNIGHT AIR MAIL SOCIETY

- 6071-76 C1's of the World. Robert Outlaw.
- 6077-80 U.S. Navy Airship Mail. Cheryl Ganz.
- 6081-85 "Interested in Airmail." Simone Short.
- 6086-87 Louis Bleriot: Man and His Aeroplane. Stephen Neulander.

- 6088-89 The Gem of the Cosmos. Ray Broms.
- 6090-97 Switzerland Air Mail. Wayne J. Fitzgibbons.
- 6098-6102 U.S. Air Mail Interruptions. Jay Foersterling.
- 6103-10 First Flights of Trinidad and Tobago. Reuben A. Ramkissoon.

## AMERICAN TOPICAL ASSOCIATION: CHICAGOLAND CHAPTER

- 6111-13 Let's Hear It For the Ladies: A Selection of Women on Stamps. Helen F. Barna.
- 6114-19 Living Hands: A Philatelic Selection Showing the Symbolic

- Use Of Hands. Judith E. Barna.
- 6120-21 America's Libraries. Civia Tuteur.
- 6122-23 Boy Scout Meters. Gary W. Hall.

## SCOUTS ON STAMPS SOCIETY INTERNATIONAL

- 6124 SOSSI on Cover. SOSSI
- 6125 75 Years of Scouting. Al Tomaszewski.
- 6126 Aeroscout Philately. Douglas Uzakewicz.
- 6127 80 Years of Polish Scouting. Arkadiusz Walinski.
- 6128 Gazetteer of Asian Scouting on Stamps. William J. Yankus.

- 6129 Cuban Scout Philately. James E. Byrne.
- 6130 Thai Scouting Anniversary and Event Stamps, Covers and Cards. James E. Byrne.
- 6131 Scout Postal Service: Czechoslovakia 1918. Walter Creitz.
- (Continued on page S78)

### The United States Specialist is probably older than you are.

Every month since January 1930, the *Specialist* has discussed U.S. stamps in a serious and scholarly way.

It continues to be the world's leading journal of 20th-century U.S. philately.

If you are an adult U.S. collector and are not reading the *Specialist*, you are missing a great deal of important information and good reading.

The *Specialist* is published by the Bureau Issues Association, Inc., a non-profit, collector-based organization.

Once we concentrated only on the output of the Bureau of Engraving and Printing. But we have changed with the times to study all U.S. stamps.

A subscription to the *Specialist* is included with BIA membership. Dues of \$20 are usually payable in January, but to allow collectors to join us now, we have a \$12 mid-year start, which includes the one-time initiation fee of \$2, and six issues of the *Specialist*.

(Visit us at Booth S-16 at World Columbian Stamp Expo.)

Bureau Issues Association, Inc. / P.O. Box 1047/Belleville, IL 62223

Enclosed is my check to Bureau Issues Assn., Inc. for \$12. Start my subscription with the July issue and send me a membership application.



Name \_\_\_\_\_

Address \_\_\_\_\_

City \_\_\_\_\_

State \_\_\_\_\_ Zip \_\_\_\_\_

THAILAND,  
P.R.C., CHINA  
BERMUDA &  
WORLDWIDE  
INEXPENSIVE STAMPS  
FOR COLLECTORS!

### BOOTH #401

## MAGELLAN ENTERPRISES



P.O. BOX 471  
DUNEDIN, FLORIDA 34697



(813) 786-5402



SDAG

(Continued from page S74)

- 6132 The First 50 Years of Imperforate Scout Stamps. **Walter M. Creitz.**
- 6133 A, B, C of Scouting. **Shirley Fisher.**
- 6134 Philately of the Fourth World Jubilee. **R.S. Frank.**
- 6135 Scout Stamp Errors and Varieties. **R.S. Frank.**
- 6136 Philatelic Material on Australian Scouting. **Frank Harris.**
- 6137 Participation of Polish Scouts in Wars for Poland's Independence. **Edward Link.**

- 6138 Polish Scouting National Jamborees Prior to 1939 and World Jamborees in Exile. **Edward Link.**
- 6139 1950 Boy Scouts of America Issue. **Lee Marks.**
- 6140 Boy Scouts of America Badges and Ranks on Stamps. **Glenn Moss.**
- 6141 1967 U.S. Boy Scout World Jamboree Postal Card. **Carl Schauer.**
- 6142 Girl Scouts and Girl Guides of the World. **Frank Merrill.**
- 6143 St. George in Scouting. **Richard Thill.**

### EVANSTON NEW TRIER PHILATELIC SOCIETY

- 6144-48 French Stampless Covers, 1775-1850. **Donald Eggen.**
- 6149-51 Columbian Exposition Envelopes, Working Dies. **Richard Foreman.**
- 6152-56 Small Queens of Canada. **Shirley Fisher.**
- 6157 Western Fort Cancellations. **Rollin C. Huggins Jr.**

- 6158-60 Ware: The Town That Can't Be Licked. **Civia Tuteur.**
- 6161-64 Lundy. **Richard Drews.**
- 6165-69 The Lady in the Harbor. **Shirley Fisher.**
- 6170 All That Jazz. **Paul Tuteur.**

### GERMANY PHILATELIC SOCIETY: CHICAGOLAND CHAPTER NO. 5.

- 6171-75 The Handoverprints of OPD Berlin. **Austin Dulin.**
- 6176-81 Munich. **Robert Glass.**
- 6182-91 Postal History of Cologne, Germany, 1585-1899. **Jacquelyn S. Alton.**
- 6192-94 German Caroline Islands, 1899-1914. **Paul Larsen.**
- 6195-6200 Overrun Countries of World War I. **Milton Kohn.**

- 6201-10 Danzig Inflation Compared with Germany.\* **Bernard A. Hennig.**
- 6211-15 Cologne 1495-1848: Heimatsammlung Köln. **Charles Tuteur.**
- 6216-25 Germany Army: World War I in Palestine. **Bela Sandor.**

\* Non-competitive.

### TOWER STAMP CLUB\*

- 6226-29 Occupations of Lithuania. **Fred Baumgartner.**
- 6230 Covers of the U.S. Civil War (North): Selected Rate Usages. **Robert Surdynski.**
- 6231-32 Saar: The Plebiscites. **Frank Bachenheimer.**
- 6233 First-Class Postage Rates Using U.S. 1906-1926 Imperforates. **George Wagner.**

- 6234-35 Military Map Stamps of Latvia. **John Jirgenson.**
- 6236-37 Bill Collectors in the 19th Century. **Remy Rubin.**
- 6238-40 Postal Union of the Americas, Spain and Portugal, and Its America Series. **William Norby.**

\* Non-competitive

(Continued on page S80)

## Quality British Commonwealth POSTAL HISTORY

*Catering to the discriminating collector*

**Specialising in pre-1953,  
non-FDC material**

**We stock all Commonwealth  
areas except B.N.A.**

If you are not already on our Wants Register, please drop us a line and let us know your requirements. We shall be pleased to send photocopies of available material.

**ALWAYS KEEN BUYERS OF  
CHOICE POSTAL HISTORY**

# Willard S. Allman

Booth 164

828 Arrow Lane, Ridgewood  
NJ 07450, U.S.A.  
Tel: 201-652-4858



### SEE OUR STOCK OF:

- U.S. POSTAL HISTORY
- PHILATELIC LITERATURE
- CLASSIC USED U.S.
- U.S. & FOREIGN FDC's
- AUTOGRAPHS

and

•We have over \$100,000 in  
consignments of choice U.S.  
fancy cancels and postal history

## STOP BY BOOTH 122

# SOCIETY EXHIBITS

All society exhibits are one-frame

- 9001 — 1948 Building Series Study Group of GPS
- 9002 — Albrecht Durer Study Unit of ATA
- 9003 — Americana Unit of ATA
- 9004 — American Association of Philatelic Exhibitors
- 9005 — American Air Mail Society
- 9006 — American Belgian Philatelic Society
- 9007 — American First Day Cover Society
- 9008 — American Helvetia Philatelic Society
- 9009 — American Philatelic Congress
- 9010 — American Plate Number Single Society
- 9011 — American Philatelic Society
- 9012 — American Philatelic Research Library
- 9013 — American Revenue Association
- 9014 — American Society of Check Collectors
- 9015 — American Society for Pages and Panels
- 9016 — American Topical Association
- 9017 — Austria Philatelic Society
- 9018 — Belize Philatelic Study Circle
- 9019 — Bermuda Collectors Society
- 9020 — Bureau Issues Association
- 9021 — Biblical Topics Study Unit of ATA
- 9022 — Biology Unit of ATA
- 9023 — Brazil Philatelic Association
- 9024 — British Caribbean Philatelic Study Group
- 9025 — Bullseye Cancel Collectors Club
- 9026 — The Carto-Philatelists
- 9027 — Chemistry and Physics on Stamps Study Unit of ATA
- 9028 — Chicago Philatelic Society
- 9029 — China Stamp Society
- 9030 — Christmas Philatelic Club
- 9031 — Confederate Stamp Alliance
- 9032 — Colombia/Panama Philatelic Study Group
- 9033 — Collectors of Religion on Stamps
- 9034 — Cover Collectors Circuit Club
- 9035 — Czeslaw Slania Study Group
- 9036 — Eire Philatelic Association
- 9037 — Errors, Freaks and Oddities Collectors Club
- 9038 — Essay-Proof Society
- 9039 — Ethiopian Philatelic Society
- 9040 — Europa Study Unit of ATA
- 9041 — Fine Arts Philatelic Society
- 9042 — France and Colonies Philatelic Society
- 9043 — Gay and Lesbian History on Stamps Study Unit of ATA
- 9044 — Germany Philatelic Society
- 9045 — Haiti Philatelic Society
- 9046 — Handoverprint Study Group of GPS
- 9047 — Hellenic Philatelic Society of America
- 9048 — Inflation Study Group of GPS
- 9049 — International Philatelic Golf Society
- 9050 — International Society of Guatemala Collectors
- 9051 — International Society of Reply Coupon Collectors
- 9052 — International Society for Japanese Philately
- 9053 — International Society of Worldwide Stamp Collectors
- 9054 — JAPOS Study Group
- 9055 — Judaica Historical Philatelic Society
- 9056 — Latin American Philatelic Society
- 9057 — Liberian Philatelic Society
- 9058 — Liechtenstein Study Group
- 9059 — Mailer's Postmark Permit Club
- 9060 — Maritime Postmark Society
- 9061 — The Marmalades
- 9062 — Maximum Card Study Unit
- 9063 — Medical Subjects Unit of ATA
- 9064 — Mesoamerican Archaeology Study Unit of ATA



## CANADIAN REVENUES

Telephone & Telegraph franks

Hunting stamps

Tobacco & Liquor stamps

semi-official airmail stamps

## BRITISH COMMONWEALTH REVENUES

Bought & Sold

Latest full color Canadian revenue catalog US \$10.95

100 different Canadian revenues with value of \$95 for only US \$22

Latest pricelist & ReveNews FREE with order or US \$2 cash to cover postage



**E.S.J. van Dam Ltd**

p.o. box 300cl

Bridgenorth, Ontario, Canada K0L 1H0

phone (705) 292-7013

fax (705) 292-6311

Visit the

## WORLD POSTAL HISTORY CENTER

W.C.S.E. Booths 119, 120, 125 & 126

Seven postal history stocks in one multi-booth, to fill the needs of every collector.

### Bud Elvgren

Box 18120, St. Paul,  
MN 55118 - (612) 457-8385  
(Worldwide Postal History  
& Autographs)

### Jim Johnson

Postal History  
International, USA  
Box 2178, Burlington,  
NC 27216 - (919) 584-1967  
(Worldwide Postal History)

### Alan Rothwell

Tristan, The Tudors,  
Kilcain Rd., Pantymwyn,  
Mold, Clywd, CH7 5EB  
Wales - (0352) 741028  
(Worldwide Postal History)

### Roger Hooper

Penobscot Stamps  
Box 1437, Marco Is., FL  
33969 - (813) 394-9282 (Oct.  
-Apr.); Gen Del, Oquossoc,  
ME 04964 (May-Sept.)  
(Worldwide Postal History)

### L. D. Mayo, Jr.

Box 20837, Indianapolis,  
IN 46220 - (317) 255-5912  
(Worldwide, Esp. 20th  
Century War Covers;  
Public Auctions)

### Web Stickney

7590 Windlawn Way, Parker  
CO 80134 - (303) 841-0316  
(Worldwide, Esp. Russia,  
Baltic States, Mexico &  
Western U.S.)

### Mike White

Box 3, Ripon, N. Yorks HG4 2AS, England  
FAX (0937) 580770  
(Worldwide Military & Occupation Mails)

Copies or material on approval sent against your want lists.  
Estates & Private collections or Accumulations accepted for  
Appraisal, Consignment Sale or Purchase

- 9065 — Meter Stamp Society
- 9066 — Metropolitan Airpost Society
- 9067 — Mexico-Elmhurst Philatelic Society International
- 9068 — Minnesota Postal History Society
- 9069 — Mobile Post Office Society
- 9070 — Nepal and Tibet Philatelic Study Circle
- 9071 — Old World Archaeological Study Unit of ATA
- 9072 — Pan Am Study Group
- 9073 — Petroleum Philatelic Society
- 9074 — Philatelic Society for Greater Southern Africa
- 9075 — Pitcairn Islands Study Group
- 9076 — Plate Number Coil Collectors Club
- 9077 — Polonus Philatelic Society
- 9078 — Post Mark Collectors Club
- 9079 — The Postal Order Society
- 9080 — Precancel Stamp Society
- 9081 — Ryukyu Philatelic Specialist Society
- 9082 — Sarawak Specialists Society
- 9083 — Scouts on Stamps Society International**
- 9084 — Ships on Stamps Unit of ATA
- 9085 — Society of Costa Rica Collectors
- 9086 — Society for Czechoslovak Philately
- 9087 — Society for Hungarian Philately
- 9088 — Society of Israel Philatelists
- 9089 — Space Unit of ATA
- 9090 — Sports Philatelists International
- 9091 — State Revenue Society
- 9092 — Stamps on Stamps Centenary Unit of ATA
- 9093 — Tonga/Tin Can Mail Study Circle
- 9094 — Ukrainian Philatelic and Numismatic Society
- 9095 — United Nations Philatelists
- 9096 — United Postal Stationery Society
- 9097 — Vatican Philatelic Society
- 9098 — Vermont Philatelic Society
- 9099 — Virginia Philatelic Federation
- 9100 — Women on Stamps Study Unit

## JOHN F. ULLMANN, INC.



WORLD COLUMBIAN  
STAMP EXPO '92

AFDCS  
ASDA  
APS  
AAMS  
USCS



CLASSIC COVERS  
CLASSIC COVERS  
It's Just Like a Bank

\*\*\*\*\*  
SPECIAL  
MID-SHOW SALE!  
50,000 CARDS & COVERS AT \$1 EACH  
\*\*\*\*\*

### THE CLASSIC COVER SPECIALIST

- U.S. & Possessions Postal History
- IL & Chicago Area Cards & Covers
- British & Foreign Postal History
- Worldwide Commercial & Philatelic Usage
- U.S. & Foreign Picture Postcards
- N.J. Postal History
- Cards & Covers by State
- Advertising Covers & Govt. Postals
- Topical Covers A-Z
- Sports - Medicine - Train Related
- Scouts - JFK - Statue of Liberty

- Ship - Steamship - Maritime
- World's Fair - Polar
- Fraternal - Original Art
- Seals & Labels
- Space - Balloon - Atomic Bomb
- Political - Tokyo Bay Canceis
- U.S. Navals, FDC's & Events
- Worldwide Flights & Rockets
- Aviation Picture Postcards
- Fam's - Cam's - Catapults
- Zep & Pioneer Flights
- T/O - Historical Flights
- Lindberghiana - Airship

P.O. Box 492 (201) 262-4223 Bergenfield, N.J. 07621

# REVENUERS ALERT

## GEORGE KRAMER'S UNITED STATES TELEGRAPH STAMPS & FRANKS

OVER 75 FULL COLOR AND 350 BLACK & WHITE ILLUSTRATIONS  
PLUS 40 PAGE PRICING & CONTROL GUIDE  
FIRST NEW STUDY OF TELEGRAPH STAMPS IN 45 YEARS  
206 PAGES HARDBOUND - LIMITED EDITION  
ORDER NOW - \$55.00 POSTPAID IF PREPAID

### THE COLLECTORS CLUB

22 EAST 35th ST., NEW YORK, N.Y. 10016  
ALSO AVAILABLE AT WORLD COLUMBIAN COLLECTORS CLUB BOOTH  
**BOOTH #SB 13-L**